

DORA

REDEFINE THE COMPACT PORTABLE LINE ARRAY

ADVANCED ACTIVE LOUDSPEAKER



PRECISION DRIVE

PLUG & PLAY

DORA IS DESIGNED TO WORK WITH BASS MODULE BY SIMPLE OPERATION FOR DYNAMIC LIVE MUSIC PERFORMANCE.



SUPERB ACOUSTIC DESIGN

25MM HIGH-FREQUENCY DRIVER IS MADE WITH A HEAT-TREATED TITANIUM FILM WITH EXTREMELY HIGH YOUNG'S MODULUS WHICH IS COMBINED WITH AN EDGE WOUNDED VOICE COIL TO ACHIEVE EXTREMELY HIGH SENSITIVITY AND HIGH-QUALITY SOUND REPRODUCTION AND IT IS LOADED WITH A PATENTED WAVEGUIDE DESIGN THAT ACHIEVES A COMBINATION OF 120 DEGREE HORIZONTAL AND 10 DEGREE VERTICAL COVERAGE.

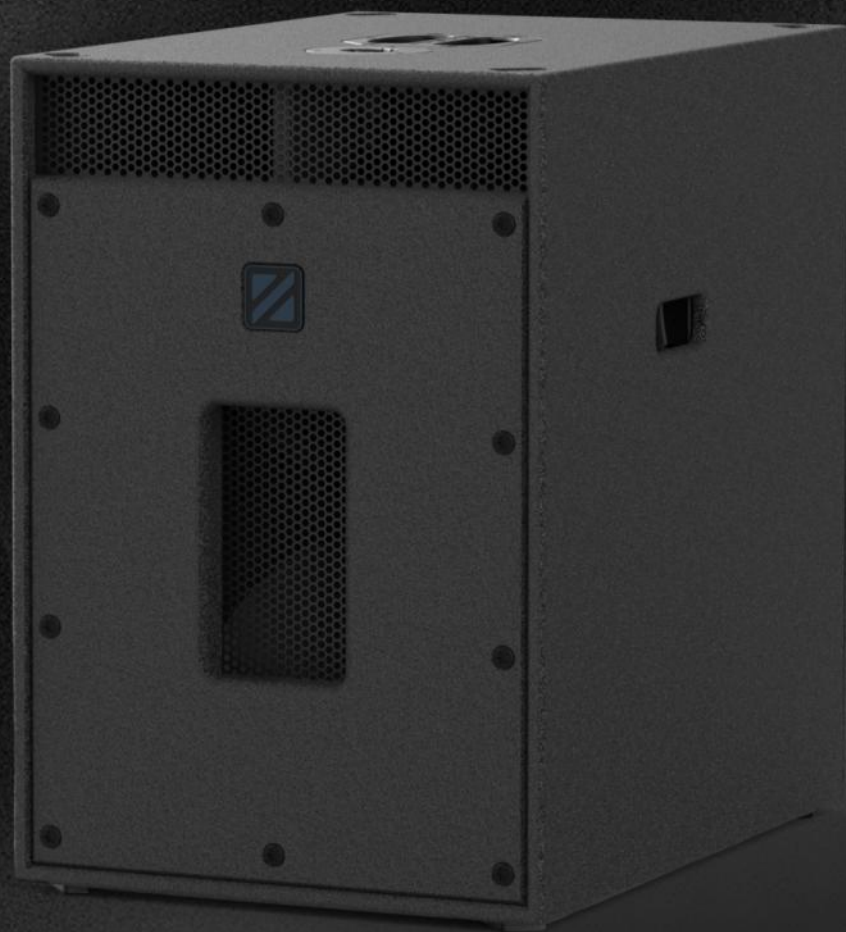
8" LIGHTWEIGHT NEODYMIUM TRANSDUCER WITH A HIGH SENSITIVITY OF 94DB/M*W AND FLAT FREQUENCY RESPONSE.



PRECISION DRIVE

SIX-ORDER BANDPASS SUBWOOFER DESIGN

SUBWOOFER MODULE USES TWO LONG-EXCURSION 12 INCH WOOFERS WITH A 6 ORDER BANDPASS CABINET DESIGN, FOR HIGH OUTPUT SOUND PRESSURE AND SMALL, LIGHT-WEIGHT DESIGN GOALS.



PRECISION DRIVE

CARDIOID CONTROL TECHNOLOGY

THE LA212SP SUBWOOFER HAS CARDIOID ARRAY PROCESSING ORIGINALLY DEVELOPED FOR CONCERT SUBWOOFER SYSTEMS. CARDIOID SUBWOOFER ARRAYS CAN BE USED TO DIRECT THE OUTPUT OF AN ARRAY OF SUBWOOFERS IN ORDER TO LIMIT EXCESSIVE AMOUNTS OF BASS IN UNDESIRED AREAS. THESE ARRAYS CAN BE USED TO KEEP BASS OFF OF A STAGE, PROVIDE MORE CONSISTENT BASS COVERAGE IN THE AUDIENCE, AND REDUCES BASS IN THE SURROUNDING AREA.

MULTIPLE LA212SP SERIES SUBS CAN BE ARRAYED TO CREATE A CARDIOID POLAR PATTERN. SEE CARDIOID PATTERN TOP VIEW. THE CARDIOID SETTING IN THE DSP IS OPTIMIZED TO PRODUCE A REAR REJECTION OF UP TO 35 DB WITHOUT ANY ADDITIONAL PROCESSING.



PRECISION DRIVE

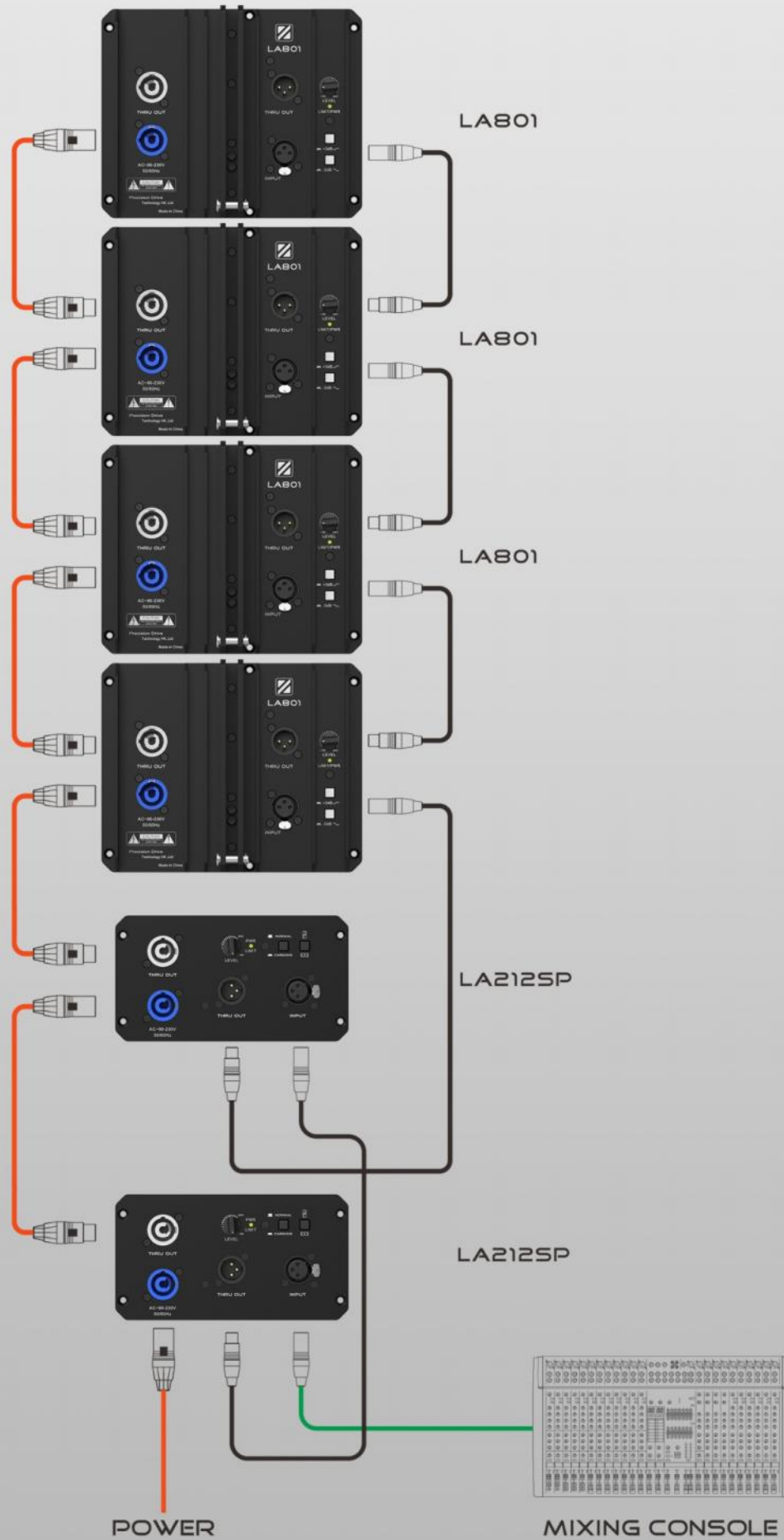
POWERCON SOCKET FOR DAISY-CHAIN POWER SUPPLY



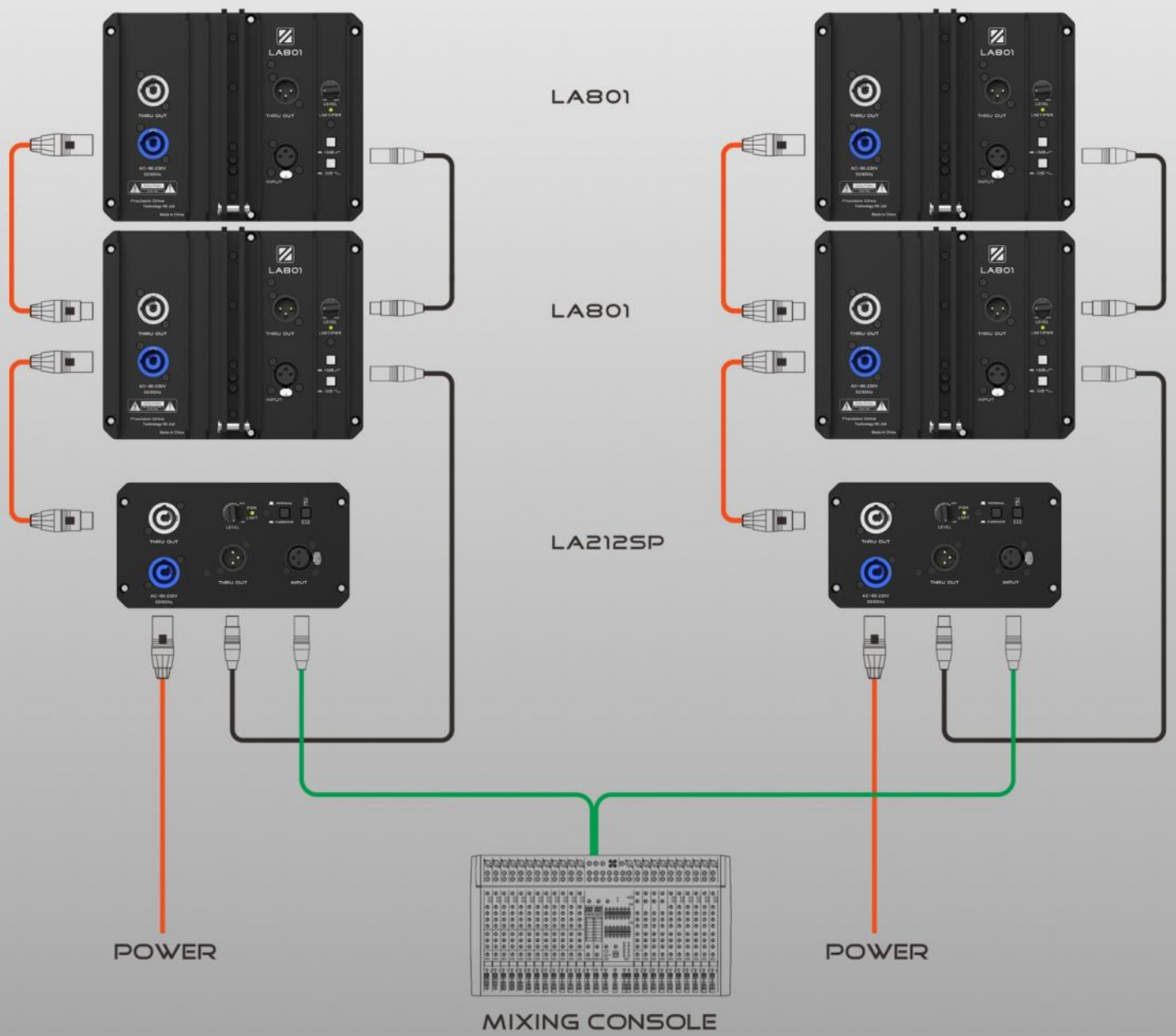
PRECISION DRIVE

MULTIPLE CONNECTION OPTIONS

DORA SYSTEM'S SIGNAL CONNECTIONS ARE VERY SIMPLE AND DIVERSE, EITHER INPUT FROM THE SUBWOOFER, ALL THE WAY TO THE TOPS, OR INPUT FROM THE TOP'S ALL THE WAY DOWN TO THE SUBWOOFERS.



SIMPLY OPERATION AND NO TRAINING NEEDED



PRECISION DRIVE

RIGGING/HEATSINK ONE BODY

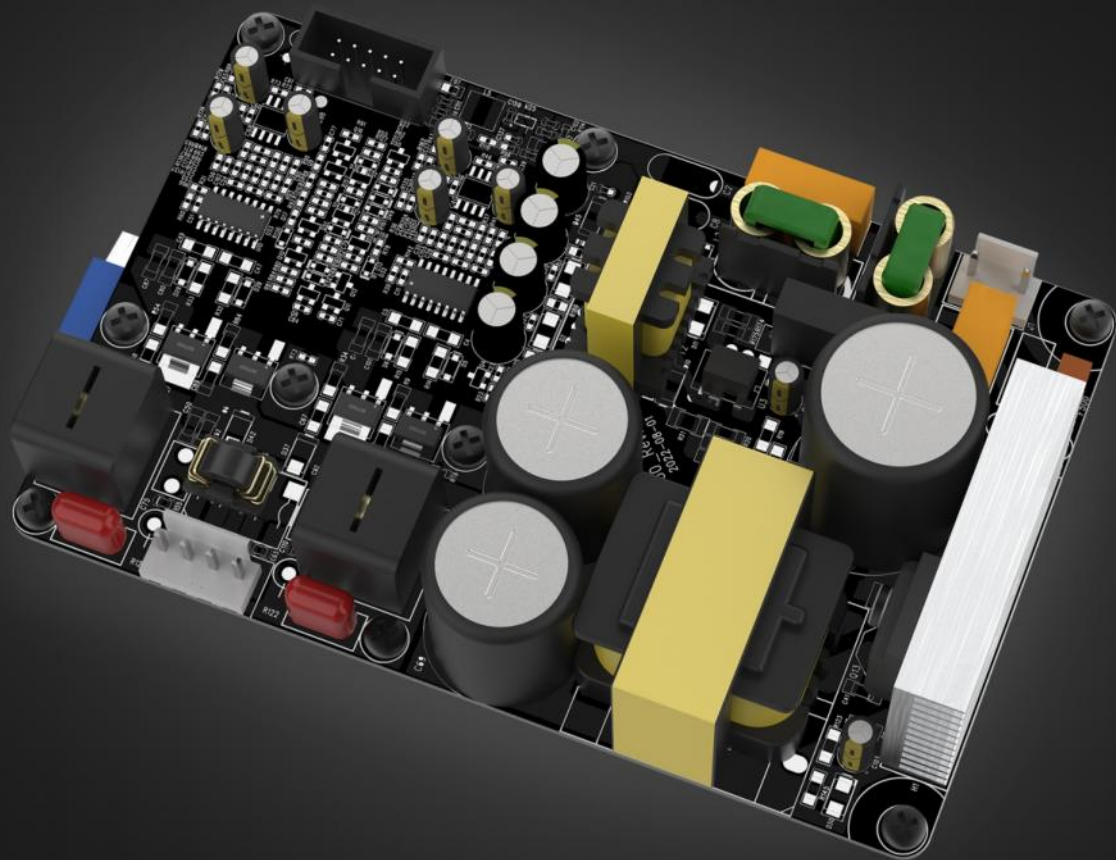
ALL NEW DESIGNED REAR RIGGING SYSTEM NOT ONLY EASY USE FOR ANGLE ADJUSTMENT, BUT ALSO WORK AS A SECONDARY HEATSINK TO SIMPLIFY SYSTEM DESIGN AND ENSURE RELIABILITY.



PRECISION DRIVE

HIGH EFFICIENT CLASS D AMP

ALL NEWLY DESIGNED UNIVERSAL MAINS INPUT
1600 WATTS PEAK POWER AMP MODULE
NOT ONLY LIGHTWEIGHT AND POWERFUL BUT ALSO BE ABLE
TO WORK FROM -20°C TO 50°C WITHOUT ANY PROBLEM.



DSP

24bit 96khz DSP for distortion free playback even at extreme conditions, and also activate protection for both transducers and amplifiers.

FULLY BALANCED ANALOGY INPUTS/OUTPUTS

Extremely low noise with fully balanced input and thru output circuits.



PRECISION DRIVE

APPLICATION EXAMPLE 1

FULL SIZE:

THROW: 100M, UP TO 2000 AUDIENCES

12×TOPS, 6×SUBS, 1×BRACKET



APPLICATION EXAMPLE 2

STANDARD SYSTEM:

THROW: 50M UP TO 800 AUDIENCES

4×TOPS, 2×SUBS, 1×BRACKET



APPLICATION EXAMPLE 3

MINI SYSTEM:

THROW: 30M 500 AUDIENCES

2×TOPS, 1×SUBS, 1×BRACKET, 1×POLE



SPECIFICATION

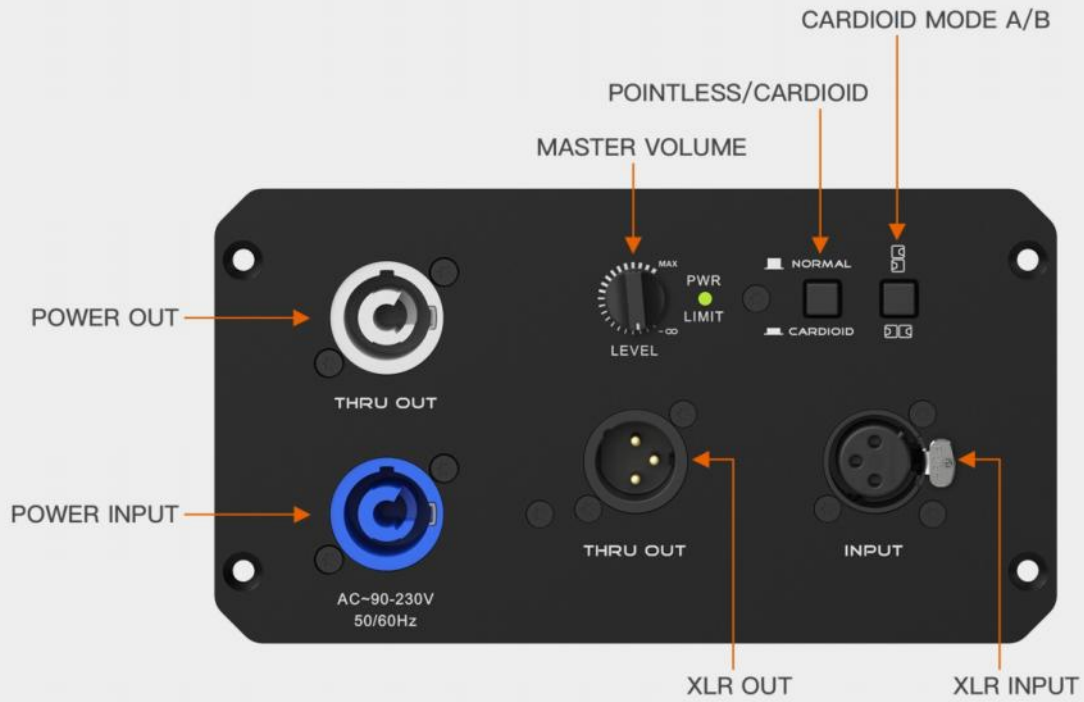


MODEL: LAB01			
FREQUENCY RANGE:	100Hz-23khz (-3dB)	AMPLIFICATION:	300W+100W Class D+SMPS
COVERAGE:	H120 degree * V10 degree	PROTECTION:	over heat/over current/short
MAX SPL:	132dB	UI:	Level control, HF gain +6dB/-3dB optional
SYSTEM DESIGN:	Line source active		
SYSTEM TYPE:	2way active	CABINET:	plywood + Polyurea
HF:	5 x 1" Ti Neo	GRILLE:	Powder coated steel
MID BASS:	1 x 8" Neo	SUSPENSION:	three point , 6mm pin
DSP:	24bit 96khz, Latency 2ms	ANGLES:	0/1/2/3/4/5/6/8
CONNECTION:	input: XLR thru out: XLR	DIMENSION:	W238*H238*D395.5
		NET WEIGHT:	4.91KG
WATERPROOFING:	Slicon rain cover	GROSS WEIGHT:	11KG (Pair Pack)



PRECISION DRIVE

SPECIFICATION

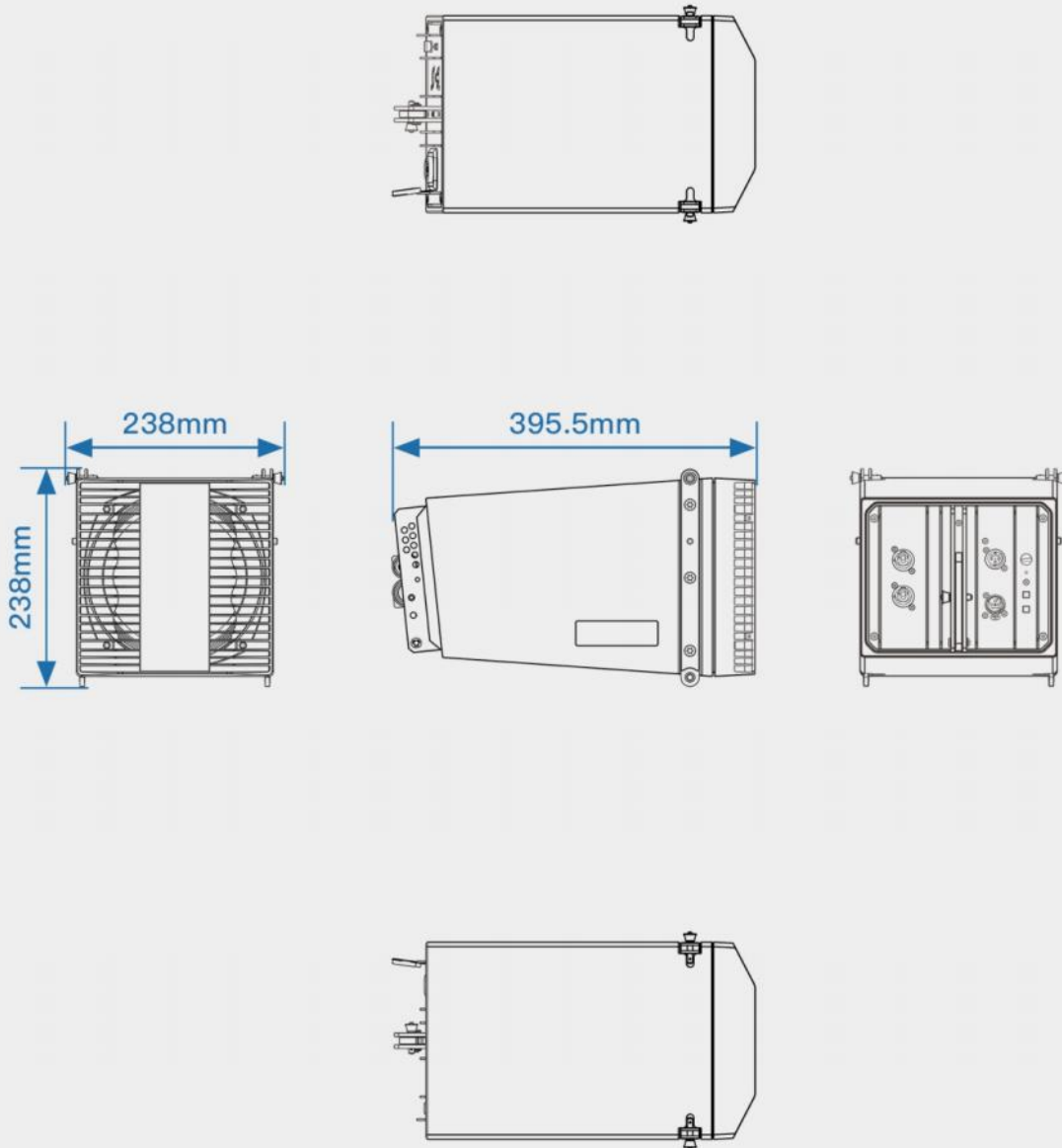


MODEL: LA212 SP	
FREQUENCY RANGE: 40-200Hz (-3dB)	TRANSDUCER: 2 x 12"
COVERAGE: 360degree (Or Cardioid for multiple Subs)	DSP: 24bit 96khz Latency 1ms
	AMPLIFICATION: 600W+600W Class D
Max SPL: 138dB	DIMENSION: W465*H675*D650
SYSTEM TYPE: Active Sub	CABINET: light weight plywood with Polyurea
ACOUSTIC DESIGN: 6 order band pass	
UI: Volume/ Cardioid	NET WEIGHT: 24.61KG
	GROSS WEIGHT: 25.8KG



PRECISION DRIVE

DIMENSION-LA801



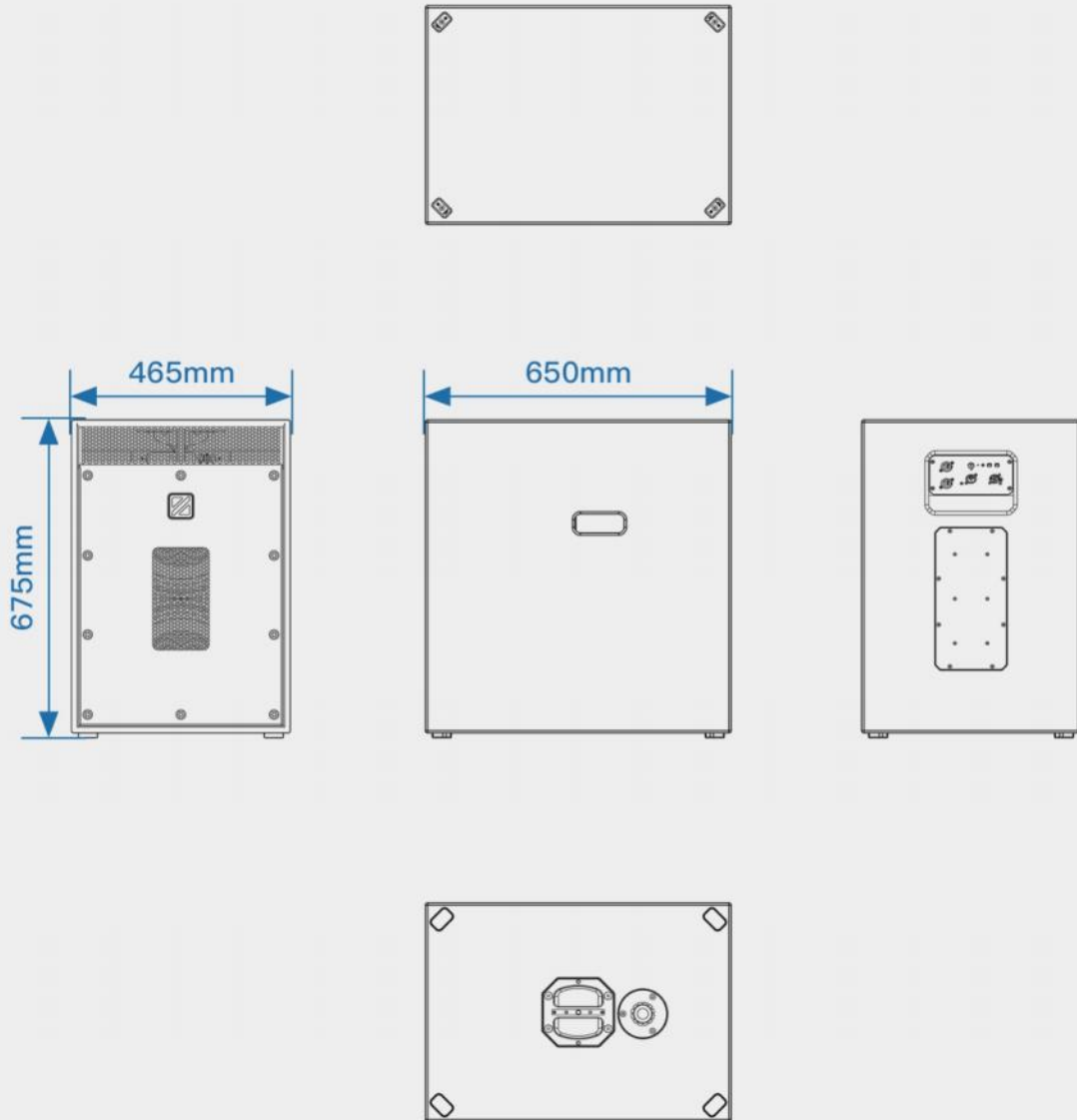
Net weight: 4.91kg

Gross weight: 11kg (Pair Pack)



PRECISION DRIVE

DIMENSION-LA212 SP



Net weight: 24.61kg

Gross weight: 25.8kg



PRECISION DRIVE